

# VIDYA BHAWAN BALIKA VIDYAPEETH

## STUDY MATERIAL SCIENCE

### CLASS-VI

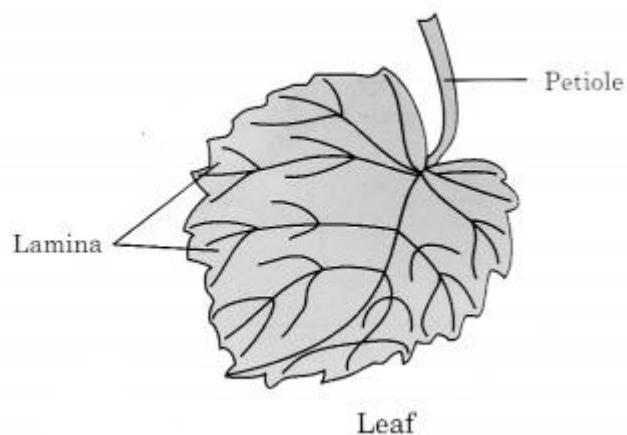
Date : 29-06-2021

Teacher : Poonam Kumari

#### ► Plants :

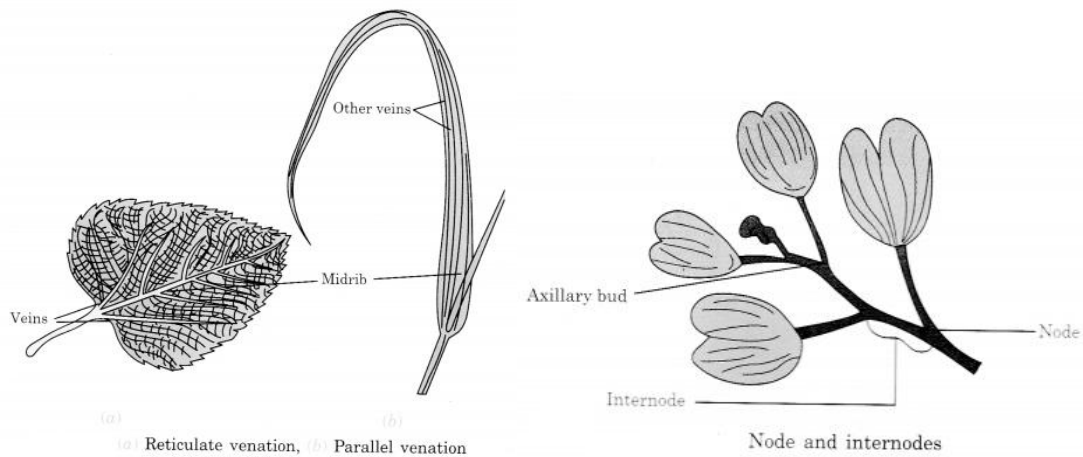
##### Leaf

- Leaves have a variety of shapes, sizes and other structures.
- **Venation:** The pattern of veins and veinlets on the leaves is called venation.
- **Veins:** Thread like structures in the leaves forming a network.



- 
- **Midrib:** It is the thick vein in the middle of the leaf.
- **Types of venation:** Two types of venation are found:
  - **Reticulate:** If the venation is in net like appearance on both sides of midrib, it is called reticulate. For example, peepal.
  - **Parallel:** In the leaves of grasses, the veins and veinlets are parallel to one another. Such a venation is called parallel.

- **Node:** Places where leaves and branches are joined to stem are called nodes.
- **Internodes:** The part of stem between two nodes is called internode.



- **Function of leaves**
  - **Transpiration:** It is the process of evaporation of water from the surface of leaves.
  - **Photosynthesis:** Green leaves synthesize food with the help of sunlight, air and water by a process called photosynthesis.